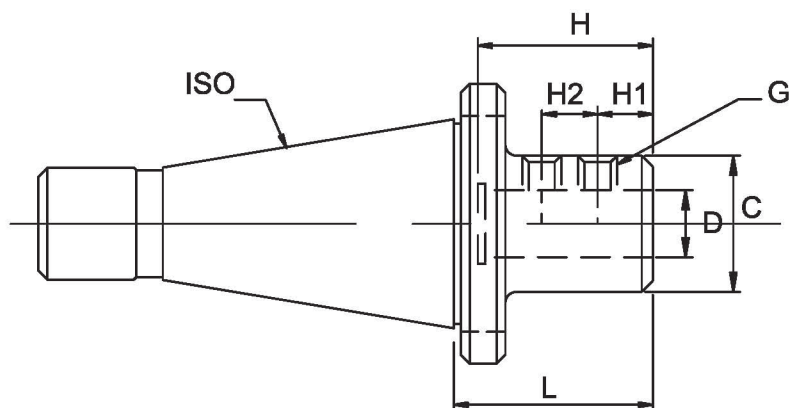


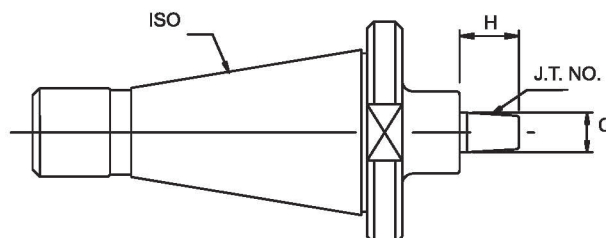
# END MILL HOLDER / SLA ISO SHANK



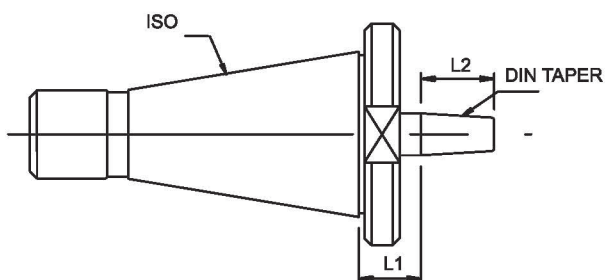
MODEL NO	D	C	H	L	H1	H2	G
ISO 30-SLA 6-55	6	25	32	55	12	10	M6
ISO 30-SLA 8-55	8	28	36	55	14	12	M8
ISO 30- SLA 10-55	10	35	40	55	15	14	M10
ISO 30- SLA 12-55	12	40	45	55	18	16	M10
ISO 30-SLA 16-60	16	45	50	60	20	18	M10
ISO 30- SLA 20-65	20	50	60	65	25	20	M12
ISO 30- SLA 25-75	25	55	65	75	25	22	M12
ISO 40- SLA 6-55	6	25	32	55	12	10	M6
ISO 40- SLA 8-55	8	28	36	55	14	12	M8
ISO 40- SLA 10-55	10	35	40	55	15	14	M10
ISO 40- SLA 12-55	12	40	45	55	20	16	M10
ISO 40- SLA 16-60	16	45	50	60	22	18	M10
ISO 40- SLA 20-65	20	50	60	65	25	20	M12
ISO 40- SLA 25-75	25	55	65	75	25	22	M12
ISO 40- SLA 32-90	32	60	70	90	30	22	M16
ISO 40- SLA 40-105	40	80	80	105	32	24	M16
ISO 50- SLA 6-90	6	25	32	90	12	10	M6
ISO 50- SLA 8-90	8	28	36	90	14	12	M8
ISO 50- SLA 10-90	10	35	40	90	15	14	M10
ISO 50- SLA 12-90	12	40	45	90	18	16	M10
ISO 50- SLA 16-90	16	45	50	90	20	18	M10
ISO 50- SLA 20-90	20	50	60	90	25	20	M12
ISO 50- SLA 20-150	20	50	60	150	25	20	M12
ISO 50- SLA 25-90	25	55	65	90	25	22	M12
ISO 50-SLA 25-150	25	55	65	150	25	22	M12
ISO 50- SLA 32-90	32	60	70	90	30	22	M16
ISO 50- SLA 32-150	32	60	70	150	30	22	M16
ISO 50-SLA 32-200	32	60	70	200	30	22	M16
ISO 50-SLA 40-105	40	80	80	105	32	24	M16
ISO 50-SLA 50-105	50	95	90	105	35	25	M20
R8- SLA 6-55	6	25	32	55	12	10	M6
R8- SLA 8-55	8	28	36	55	14	12	M8
R8- SLA 10-55	10	35	40	55	15	14	M10
R8- SLA 12-55	12	40	45	55	18	16	M10
R8- SLA 16-60	16	45	50	60	20	18	M10
R8-SLA 20-65	20	50	60	65	25	20	M12
R8-SLA 25-75	25	55	65	75	25	22	M12

**DRILL CHUCK HOLDER / JTA**

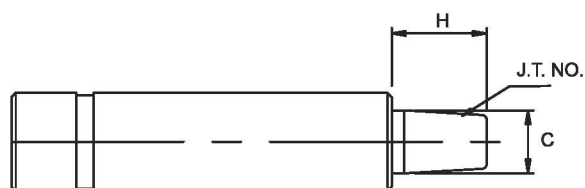
MODEL NO.	JT.NO.	C	H
ISO 30-JTA1	JTA1	9.754	18
ISO 30-JTA2	JTA2	13.94	20
ISO 30-JTA6	JTA6	17.17	26
ISO 40-JTA1	JTA1	9.754	18
ISO 40-JTA2	JTA2	13.94	20
ISO 40-JTA6	JTA6	17.17	26
ISO 50-JTA1	JTA1	9.754	18
ISO 50-JTA2	JTA2	13.94	20
ISO 50-JTA6	JTA6	17.17	26
R8-JTA1	JTA1	9.754	18
R8-JTA2	JTA2	13.94	20
R8-JTA6	JTA6	17.17	26


**DRILL CHUCK HOLDER / APU**

Model No.	DIN Taper No.	L1	L2	G
ISO 30-B12	B12	13.5	18.5	M12
ISO 30-B16	B16	15	24	M12
ISO 40-B12	B12	15	18.5	M16
ISO 40-B16	B16	17	24	M16
ISO 40-B18	B18	17	32	M16
ISO 50-B16	B16	20	24	M24
ISO 50-B18	B18	20	32	M24


**STRAIGHT SHANK DRILL CHUCK HOLDER / JTA**

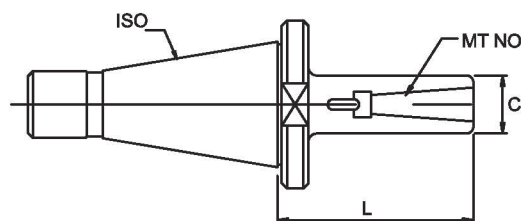
Model No.	JT.No	C	H
S20-JTA1	JTA1	9.754	18
S20-JTA2	JTA2	13.94	20
S20-JTA6	JTA6	17.17	26
S25-JTA1	JTA1	9.754	18
S25-JTA2	JTA2	13.94	20
S25-JTA6	JTA6	17.17	26





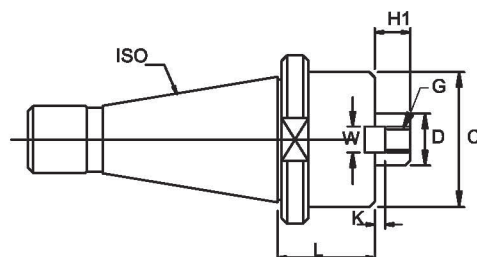
## MORSE TAPER HOLDER ISO30, ISO40, IS50, R8

Model.No.	M.T.NO.	L	C
ISO30-MTA1-45	MTA1	45	25
ISO30-MTA2-50	MTA2	50	32
ISO30-MTA3-65	MTA3	65	40
ISO40-MTA1-30	MTA1	30	25
ISO40-MTA2-40	MTA2	40	32
ISO40-MTA3-70	MTA3	70	40
ISO40-MTA4-90	MTA4	90	50
ISO50-MTA2-30	MTA2	30	32
ISO50-MTA3-30	MTA3	30	40
ISO50-MTA4-70	MTA4	70	50
ISO50-MTA5-105	MTA5	105	65
R8-MTA1-20	MTA1	20	25
R8-MTA2-30	MTA2	30	32
R8-MTA3-50	MTA3	50	40



## FACE MILL HOLDER

Model No.	D	H1	W	K	C	L	P	G
ISO30-FMB22-40	22	18	10	5	44	45	-	M10
ISO30-FMB27-20	27	20	12	7	54	45	-	M12
ISO30-FMB32-20	32	23	14	7	64	45	-	M16
ISO40-FMB22-20	22	18	10	5	44	45	-	M10
ISO40-FMB27-20	27	20	12	7	65	45	-	M12
ISO40-FMB32-20	32	21	14	7	73	45	-	M16
ISO40-FMB40-20	40	23	16	8	85	45	-	M16
ISO40-FMB60-24	60	32	25	5	128.6	45	101.6	-
ISO50-FMB22-20	22	18	10	5	44	45	-	M10
ISO50-FMB27-20	27	20	12	7	65	45	-	M12
ISO50-FMB32-20	32	21	14	7	73	45	-	M16
ISO50-FMB40-20	40	23	16	8	85	45	-	M16
ISO50-FMB60-24	60	32	25	5	128.6	45	101.6	-
R8-FMB22-20	22	18	10	5	48	45	-	M10
R8-FMB27-20	27	20	12	7	54	45	-	M12



## SIDE CUTTER ARBOR / SCA

Model No.	D	C	G	L
ISO30-SCA27-L	27	40	M25*1.5	75, 100, 125, 150
ISO30-SCA32-L	32	45	M31*2	75, 100, 125, 150
ISO40-SCA27-L	27	40	M25*1.5	75, 100, 125, 150, 175, 200
ISO40-SCA32-L	32	45	M31*2	75, 100, 125, 150, 175, 200
ISO50-SCA27-L	27	40	M25*1.5	75, 100, 125, 150, 175, 200
ISO50-SCA32-L	32	45	M31*2	75, 100, 125, 150, 175, 200
ISO50-SCA40-L	40	50	M36*P2	75, 100, 125, 150, 175, 200

