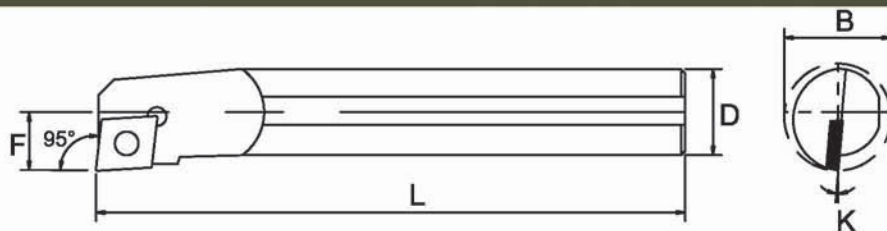
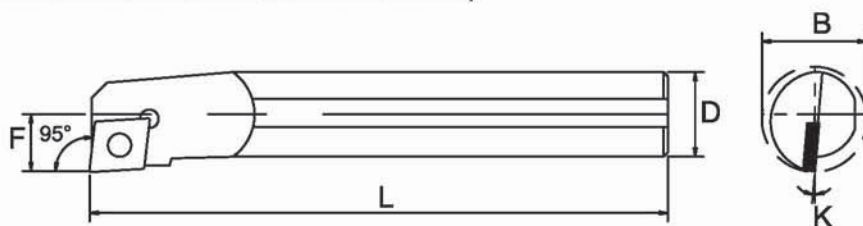


## BORING BARS - INTERNAL



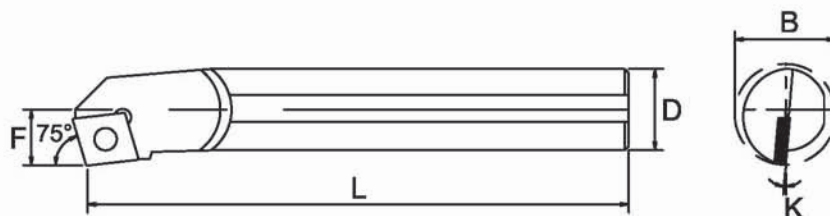
SCLC 95 Deg

Order No. Right & Left Hand	Insert	Dimensions					Parts	
		D	F	L	B	K deg		
S08H-SCLCR/L06	CCMT0602	8	6	100	12	9 deg	Ø2.5	T-8
S08H-SCLCR/L06-10	CCMT0602	8	5.5	100	10	9 deg	Ø2.5	T-8
S10K-SCLCR/L06	CCMT0602	10	7	125	14	7 deg	Ø2.5	T-8
S10K-SCLCR/L06-12	CCMT0602	10	6	125	12	7 deg	Ø2.5	T-8
S12M-SCLCR/L06	CCMT0602	12	9	150	16	6 deg	Ø2.5	T-8
S12M-SCLCR/L06-14	CCMT0602	12	7	150	14	6 deg	Ø2.5	T-8
S16Q-SCLCR/L06	CCMT0602	16	9	180	18	7 deg	Ø2.5	T-8
S12M-SCLCR/L09	CCMT09T3	12	8	150	16	6 deg	Ø3.5	T-15
S16Q-SCLCR/L09	CCMT09T3	16	11	180	20	7 deg	Ø3.5	T-15
S16Q-SCLCR/L09-18	CCMT09T3	16	9	180	18	7 deg	Ø3.5	T-15
S20R-SCLCR/L09	CCMT09T3	20	13	200	25	5 deg	Ø3.5	T-15
S20R-SCLCR/L09-22	CCMT09T3	20	11	200	22	5 deg	Ø3.5	T-15
S25R-SCLCR/L09	CCMT09T3	25	17	200	32	5 deg	Ø3.5	T-15
S25R-SCLCR/L12	CCMT1204	25	17	200	32	5 deg	Ø4.5	T-20



SCLP 95 Deg

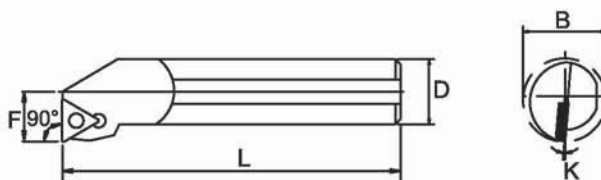
Order No. Right & Left Hand	Insert	Dimensions					Parts	
		D	F	L	B	K deg	Screw	Key
S08H-SCLPR/L06	CPMT0602	8	6	100	12	7 deg	Ø2.5	T-8
S10K-SCLPR/L06	CPMT0602	10	7	125	14	7 deg	Ø2.5	T-8
S12M-SCLPR/L06	CPMT0602	12	9	150	16	6 deg	Ø2.5	T-8
S10K-SCLPR/L08	CPMT0802	10	7	125	14	7 deg	Ø3.0	T-10
S10K-SCLPR/L08-12	CPMT0802	10	6	125	12	7 deg	Ø3.0	T-10
S12M-SCLPR/L08	CPMT0802	12	8	150	16	6 deg	Ø3.0	T-10
S12M-SCLPR/L08-14	CPMT0802	12	7	150	14	6 deg	Ø3.0	T-10
S12M-SCLPR/L09	CPMT0903	12	8	150	16	6 deg	Ø4.0	T-15
S12M-SCLPR/L09-14	CPMT0903	12	7	150	14	6 deg	Ø4.0	T-15
S16Q-SCLPR/L09	CPMT0903	16	10	180	20	4 deg	Ø4.0	T-15
S16Q-SCLPR/L09-18	CPMT0903	16	9	180	18	4 deg	Ø4.0	T-15
S20R-SCLPR/L09	CPMT0903	20	12.5	200	25	4 deg	Ø4.0	T-15
S20R-SCLPR/L09-22	CPMT0903	20	11	200	22	4 deg	Ø4.0	T-15
S25R-SCLPR/L09	CPMT0903	25	16	200	32	4 deg	Ø4.0	T-15



SCKP 75 Deg

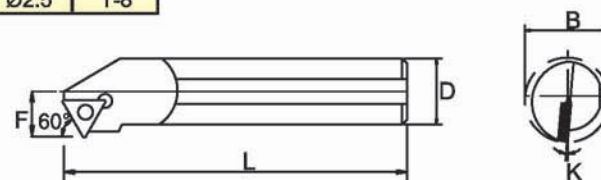
Order No. Right & Left Hand	Insert	Dimensions					Parts	
		D	F	L	B	K deg		
S12M-SCKPR/L09	CPMT0903	12	7	150	16	6 deg	Ø4.0	T-15
S16Q-SCKPR/L09	CPMT0903	16	9	180	20	4 deg	Ø4.0	T-15
S20R-SCKPR/L09	CPMT0903	20	11	200	25	4 deg	Ø4.0	T-15
S25R-SCKPR/L09	CPMT0903	25	17	200	32	4 deg	Ø4.0	T-15

## STFC 90 Deg



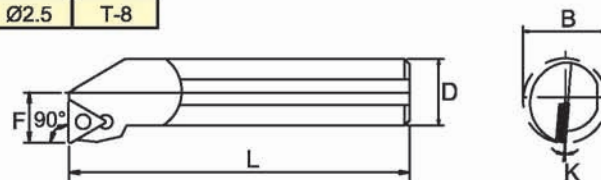
Order No. Right & Left Hand	Insert	Dimensions					Parts	
		D	F	L	B	K deg	Screw	Key
S08H-STFCR/L09	TCMT0902	8	6	100	12	12 deg	Ø2.2	T-7
S10K-STFCR/L09	TCMT0902	10	7	125	14	15 deg	Ø2.2	T-7
S12M-STFCR/L09	TCMT0902	12	9	150	16	10 deg	Ø2.2	T-7
S10K-STFCR/L11	TCMT1102	10	7	125	14	15 deg	Ø2.5	T-8
S12M-STFCR/L11	TCMT1102	12	9	150	16	10 deg	Ø2.5	T-8
S16Q-STFCR/L11	TCMT1102	16	11	180	20	6 deg	Ø2.5	T-8
S20R-STFCR/L11	TCMT1102	20	13	200	25	3 deg	Ø2.5	T-8
S25R-STFCR/L16	TCMT1102	25	17	200	32	6 deg	Ø2.5	T-8

## STWC 60 Deg



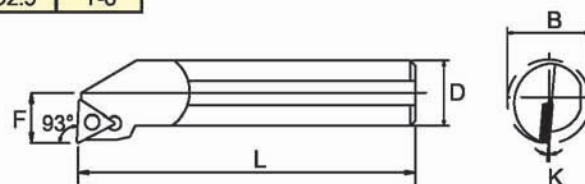
Order No. Right & Left Hand	Insert	Dimensions					Parts	
		D	F	L	B	K deg	Screw	Key
S08H-STWCR/L09	TCMT0902	8	6	100	10	13 deg	Ø2.2	T-7
S10K-STWCR/L11	TCMT1102	10	7	125	13	10 deg	Ø2.5	T-8
S12M-STWCR/L11	TCMT1102	12	9	150	16	8 deg	Ø2.5	T-8
S16Q-STWCR/L11	TCMT1102	16	11	180	20	6 deg	Ø2.5	T-8
S20R-STWCR/L11	TCMT1102	20	13	200	25	4 deg	Ø2.5	T-8

## STFP 90 Deg



Order No. Right & Left Hand	Insert	Dimensions					Parts	
		D	F	L	B	K deg	Screw	Key
S10K-STFPR/L11	TPMT1102	10	7	125	14	7 deg	Ø2.5	T-8
S12M-STFPR/L11	TPMT1102	12	9	150	16	6 deg	Ø2.5	T-8
S16Q-STFPR/L11	TPMT1102	16	11	180	20	4 deg	Ø2.5	T-8
S20R-STFPR/L11	TPMT1102	20	13	200	25	4 deg	Ø2.5	T-8

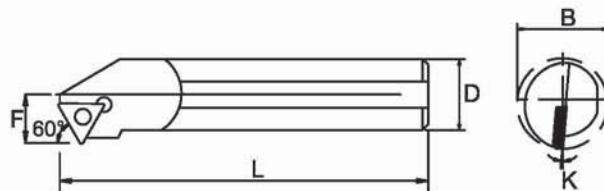
## STUP 93 Deg



Order No. Right & Left Hand	Insert	Dimensions					Parts	
		D	F	L	B	K deg	Screw	Key
S08H-STUPR/L06-08	TBGT0601	8	4	100	8	12 deg	Ø2.0	T-6
S08H-STUPR/L08	TPGT0802	8	5	100	10	10 deg	Ø2.2	T-7
S10K-STUPR/L09-12	TPMT0902	10	6	125	12	8 deg	Ø2.2	T-7
S12M-STUPR/L09	TPMT0902	12	8	150	16	5 deg	Ø2.2	T-7
S12M-STUPR/L09-14	TPMT0902	12	7	150	14	5 deg	Ø2.2	T-7
S10K-STUPR/L11	TPMT1103	10	6	125	12	8 deg	Ø2.5	T-8
S12M-STUPR/L11	TPMT1103	12	8	150	16	6 deg	Ø2.5	T-8
S12M-STUPR/L11-14	TPMT1103	12	7	150	14	7 deg	Ø2.5	T-8
S16Q-STUPR/L11	TPMT1103	16	10	180	20	2 deg	Ø2.5	T-8
S16Q-STUPR/L11-18	TPMT1103	16	9	180	18	4 deg	Ø2.5	T-8
S20R-STUPR/L11	TPMT1103	20	12.5	200	25	2 deg	Ø2.5	T-8
S20R-STUPR/L11-22	TPMT1103	20	12.5	200	22	2 deg	Ø2.5	T-8
S20R-STUPR/L16	TPMT1604	20	12.5	200	25	3 deg	Ø4.0	T-15
S25R-STUPR/L16	TPMT1604	25	16	200	32	2 deg	Ø4.0	T-15

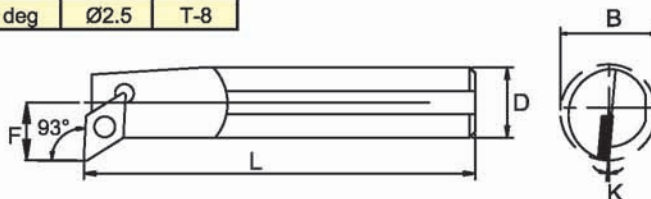


## STWP 60 Deg



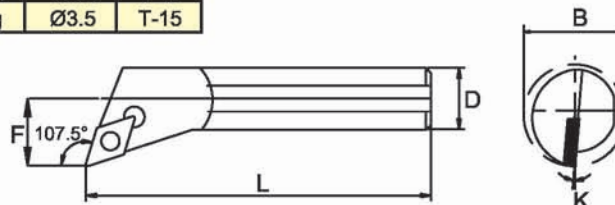
Order No. Right & Left Hand	Insert	Dimensions					Parts	
		D	F	L	B	K deg	Screw	Key
S08H-STWPR/L08	TPGT0802	8	6	100	10	10 deg	Ø2.2	T-7
S10K-STWPR/L11	TPMT1103	10	7	125	13	8 deg	Ø2.5	T-8
S12M-STWPR/L11	TPMT1103	12	9	150	16	5 deg	Ø2.5	T-8
S16Q-STWPR/L11	TPMT1103	16	11	180	20	4 deg	Ø2.5	T-8
S20R-STWPR/L11	TPMT1103	20	13	200	25	3 deg	Ø2.5	T-8

## SDUC 93 Deg



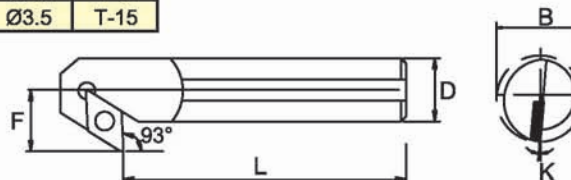
Order No. Right & Left Hand	Insert	Dimensions					Parts	
		D	F	L	B	K deg	Screw	Key
S10M-SDUCR/L07	DCMT0702	10	7	125	13	10 deg	Ø2.5	T-8
S12M-SDUCR/L07	DCMT0702	12	9	150	16	8 deg	Ø2.5	T-8
S16Q-SDUCR/L07	DCMT0702	16	11	180	20	6 deg	Ø2.5	T-8
S20R-SDUCR/L11	DCMT11T3	20	13	200	25	8 deg	Ø3.5	T-15
S25R-SDUCR/L11	DCMT11T3	25	17	200	32	4 deg	Ø3.5	T-15

## SDQC107.5 Deg



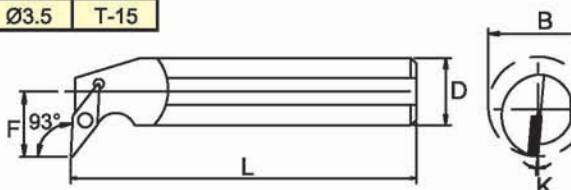
Order No. Right & Left Hand	Insert	Dimensions					Parts	
		D	F	L	B	K deg	Screw	Key
S10M-SDQCR/L07	DCMT0702	10	7	125	13	10 deg	Ø2.5	T-8
S12M-SDQCR/L07	DCMT0702	12	9	150	16	8 deg	Ø2.5	T-8
S16Q-SDQCR/L07	DCMT0702	16	11	180	20	6 deg	Ø2.5	T-8
S20R-SDQCR/L11	DCMT11T3	20	13	200	25	8 deg	Ø3.5	T-15
S25R-SDQCR/L11	DCMT11T3	25	17	200	32	4 deg	Ø3.5	T-15

## SDZC 93 Deg



Order No. Right & Left Hand	Insert	Dimensions					Parts	
		D	F	L	B	K deg	Screw	Key
S10M-SDZCR/L07	DCMT0702	10	8.5	125	14	10 deg	Ø2.5	T-8
S12M-SDZCR/L07	DCMT0702	12	10.5	150	17	9 deg	Ø2.5	T-8
S16Q-SDZCR/L07	DCMT0702	16	12.5	180	21	8 deg	Ø2.5	T-8
S20R-SDZCR/L11	DCMT11T3	20	15.5	200	26	8 deg	Ø3.5	T-15
S25R-SDZCR/L11	DCMT11T3	25	18	200	33	6 deg	Ø3.5	T-15

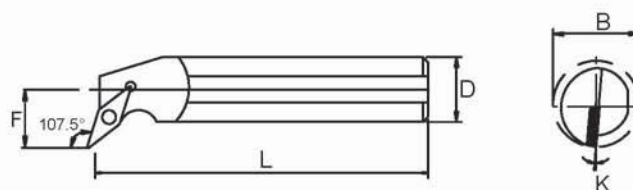
## SVUC 93 Deg



Order No. Right & Left Hand	Insert	Dimensions					Parts	
		D	F	L	B	K deg	Screw	Key
S16Q-SVUCR/L11	VCMT1103	16	13	180	22	7 deg	Ø2.5	T-8
S20R-SVUCR/L11	VCMT1103	20	15	200	27	6 deg	Ø2.5	T-8
S25R-SVUCR/L16	VCMT1604	25	18	200	33	4 deg	Ø3.5	T-15

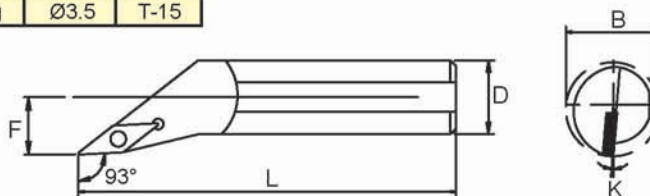


### SVQC 107.5 Deg



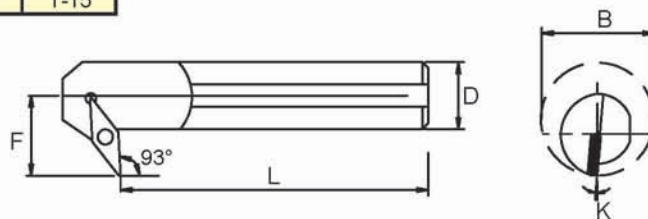
Order No. Right & Left Hand	Insert	Dimensions					Parts	
		D	F	L	B	K deg	Screw	Key
S16Q-SVQCR/L11	VCMT1103	16	13	180	22	7 deg	Ø2.5	T-8
S20R-SVQCR/L11	VCMT1103	20	15	200	27	6 deg	Ø2.5	T-8
S25R-SVQCR/L16	VCMT1604	25	18	200	33	4 deg	Ø3.5	T-15

### SVJC 93 Deg



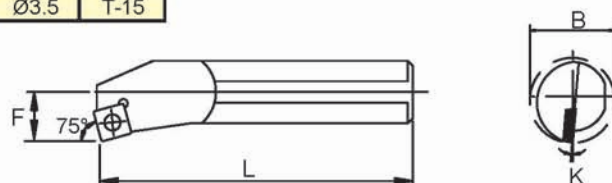
Order No. Right & Left Hand	Insert	Dimensions				Parts	
		D	F	L	K deg	Screw	Key
S16Q-SVJCR/L16	VCMT1604	16	9	180	7 deg	Ø3.5	T-15
S20R-SVJCR/L16	VCMT1604	20	10.5	200	6 deg	Ø3.5	T-15
S25R-SVJCR/L16	VCMT1604	25	13.5	200	4 deg	Ø3.5	T-15
S32S-SVJCR/L16	VCMT1604	32	17	250	4 deg	Ø3.5	T-15

### SVZC 93 Deg



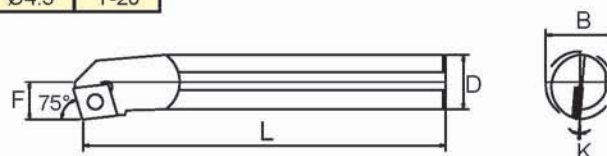
Order No. Right & Left Hand	Insert	Dimensions					Parts	
		D	F	L	B	K deg	Screw	Key
S25R-SVZCR/L16	VCMT1604	25	20.5	200	35	-7.5 deg	Ø3.5	T-15
S32S-SVZCR/L16	VCMT1604	32	22	250	40	-7.5 deg	Ø3.5	T-15
S40T-SVZCR/L16	VCMT1604	40	27	300	50	-7.5 deg	Ø3.5	T-15

### SSKC 75 Deg



Order No. Right & Left Hand	Insert	Dimensions					Parts	
		D	F	L	B	K deg	Screw	Key
S16Q-SSKCR/L09	SCMT09T3	16	11	180	20	11 deg	Ø4.0	T-15
S20R-SSKCR/L09	SCMT09T3	20	13	200	25	6 deg	Ø4.0	T-15
S25R-SSKCR/L12	SCMT1204	25	17	200	32	7 deg	Ø4.5	T-20
S32S-SSKCR/L12	SCMT1204	32	22	250	40	7 deg	Ø4.5	T-20

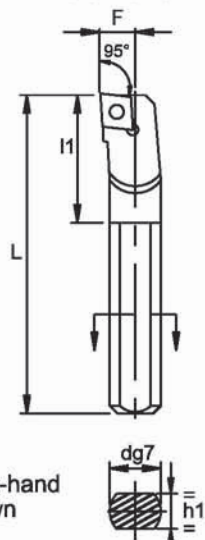
### SSKC 75 Deg



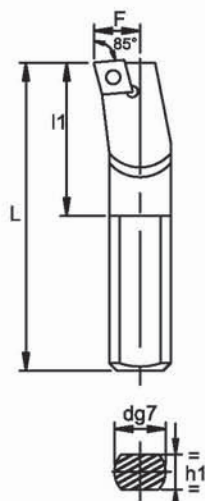
Order No. Right & Left Hand	Insert	Dimensions					Parts	
		D	F	L	B	K deg	Screw	Key
S08H-SCKCR/L06	CCMT0602	8	6	100	12	9 deg	Ø2.5	T-8
S10K-SCKCR/L06	CCMT0602	10	7	125	14	7 deg	Ø2.5	T-8
S12M-SCKCR/L06	CCMT0602	12	9	150	16	6 deg	Ø2.5	T-8
S16Q-SCKCR/L09	CCMT09T3	16	11	180	20	7 deg	Ø3.5	T-15
S20R-SCKCR/L09	CCMT09T3	20	13	200	25	5 deg	Ø3.5	T-15
S25R-SCKCR/L09	CCMT09T3	25	17	200	32	5 deg	Ø3.5	T-15

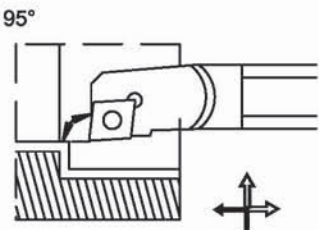
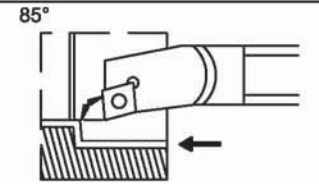


SCLCR/L


Right-hand  
Shown

SCYCR/L


Geometry of the  
insert seating:  
Cutting rake 0°


Application	Part No.	Dimensions in mm						rake	Inserts CC_T
		D min	d	h1	L	l1	F		
	S08K-SCLCR/L06	10	8	7	125	-	5	-12°	0602..
	S10M-SCLCR/L06	12	10	9	150	-	6	-10°	
	S12M-SCLCR/L06	16	12	11	150	-	9	-9°	
	S12M-SCLCR/L09	16	12	11	150	-	9	-9°	09T3..
	S16R-SCLCR/L09	20	16	15	200	32.5	11	-8°	
	S20S-SCLCR/L09	25	20	18	250	38	13	-8°	
	S25T-SCLCR/L09	32	25	23	300	45	17	-6°	
	S25T-SCLCR/L12	32	25	23	300	45	17	-6°	1204..
	S32U-SCLCR/L12	40	32	30	350	50	22	-10°	
	S40V-SCLCR/L12	50	40	37	400	60	27	-8°	
	S12N-SCYCR 09	17	12	11	160	30	9	-11°	09T3..
	S12N-SCYCR 09-R	17	12	-	160	30	9	-11°	
	S16Q-SCYCR 09	22	16	15	180	40	11	-5°	
	S20R-SCYCR 09	25	20	18	200	40	13	-5°	

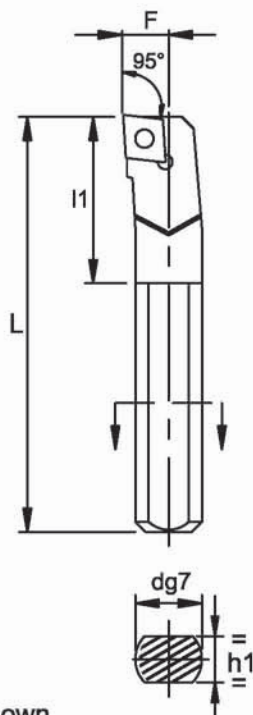
### Spare Parts

INSERT	INSERT SCREW	TORX KEY
CCMT 060204	M2.5 X 0.45	T 8
CCMT 09T308	M3.5 X 0.60	T 15
CCMT 120408	M4.5 X 0.75	T 20

Note:

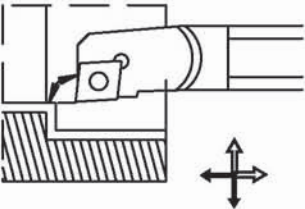
We can suit ISO insert any make like  
SANDVIK, SECO, WIDIA, KORLOY, MITSUBISHI, ISCAR,  
TAEGUTEC, PLANSEE TIZIT, KYOCERA etc.,

### SCLCR/L (CARBIDE SHANK)



Geometry of the  
insert seating:  
Cutting rake 0°

Right-hand Shown

Application	Part No.	Dimensions in mm					rake	Inserts CC_T	
		D min	d	h1	L	l1			F
<div>95°</div> 	C08K-SCLCR/L 06	10	8	7	125	-	5	-12°	0602..
	C10M-SCLCR/L 06	12	10	9	150	-	6	-10°	
	C12M-SCLCR/L 06	16	12	11	150	-	9	-9°	
	C12M-SCLCR/L 09	16	12	11	150	-	9	-9°	09T3..
	C16R-SCLCR/L 09	20	16	15	200	32.5	11	-8°	
	C20S-SCLCR/L 09	25	20	18	250	38	13	-8°	
	C25T-SCLCR/L 09	32	25	23	300	45	17	-6°	
	C25T-SCLCR/L 12	32	25	23	300	45	17	-6°	1204..
	C32U-SCLCR/L 12	40	32	30	350	50	22	-10°	
	C40V-SCLCR/L 12	50	40	37	400	60	27	-8°	

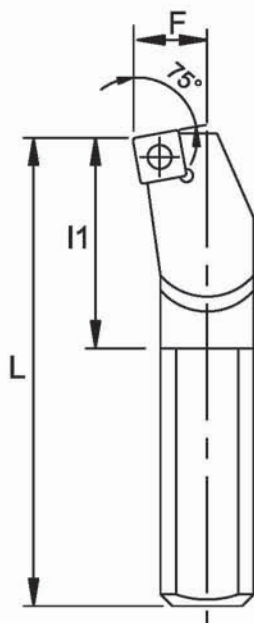
### Spare Parts

INSERT	INSERT SCREW	TORX KEY
CCMT 060204	M2.5 X 0.45	T 8
CCMT 09T308	M3.5 X 0.60	T 15
CCMT 120408	M4.5 X 0.75	T 20

Note:

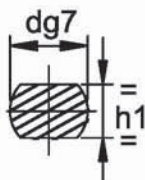
We can suit ISO insert any make like  
SANDVIK, SECO, WIDIA, KORLOY, MITSUBISHI, ISCAR,  
TAEGUTEC, PLANSEE TIZIT, KYOCERA etc.,

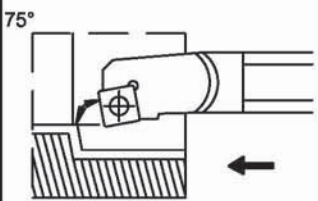
## SSKCR/L



Geometry of the  
insert seating:  
Cutting rake 0°

Right-hand Shown



Application	Part No.	Dimensions in mm						rake	Inserts SC_T
		D min	d	h1	L	l1	F		
	S12M-SSKCR 09	16	12	11	150	26	9	-10°	09T3..
	S16R-SSKCR 09	20	16	15	200	32.5	11	-11°	
	S20S-SSKCR 09	25	20	18	250	34.5	13	-8°	
	S25T-SSKCR 12	32	25	23	300	36.3	17	-8°	1204..
	S32U-SSKCR 12	40	32	30	350	43.5	22	-10°	

## Spare Parts

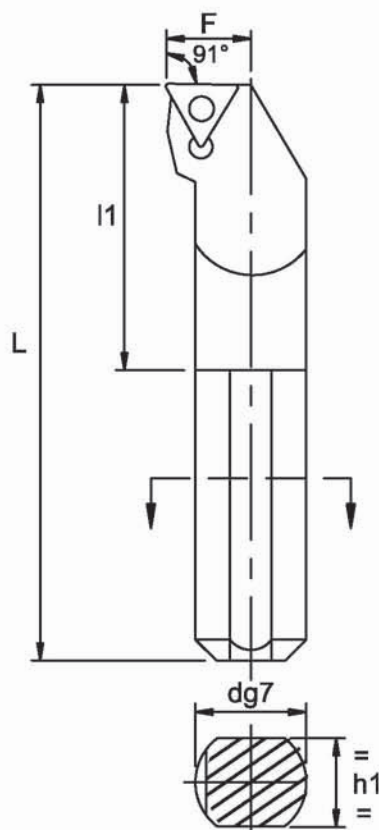
Insert	Insert screw	Torx key
SCMT 09T308	M3.5 X 0.60	T 15
SCMT 120408	M4.5 X 0.75	T 15

Note:

We can suit ISO insert any make like

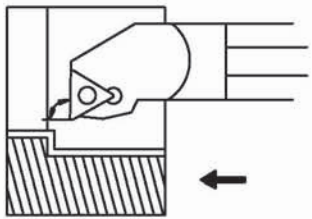
SANDVIK, SECO, WIDIA, KORLOY, MITSUBISHI, ISCAR, TAEGUTEC, PLANSEE TIZIT, KYOCERA etc.,

## STFCR/L



Geometry of the  
insert seating:  
Cutting rake 0°

Right-hand Shown

Application	Part No.	Dimensions in mm						rake	Inserts TCM
		d	h1	L	l1	F	D min		
91° 	S12M-STFCR/L 11	12	11	150	30	9	16	-10°	1102..
	S16R-STFCR/L 11	16	15	200	35	11	20	-6°	
	S20S-STFCR/L 11	20	18	250	30	13	25	-3°	
	S25T-STFCR/L 16	25	23	300	37	17	32	-6°	16T3..
	S32U-STFCR/L 16	32	30	350	43	22	40	-10°	
	S40V-STFCR/L 16	40	37	400	60	27	50	-8°	

## Spare Parts

Insert	Insert screw	Torx key
TCMT 1102	M2.5 X 0.45	T 8
TCMT 16T3	M3.5 X 0.60	T 15

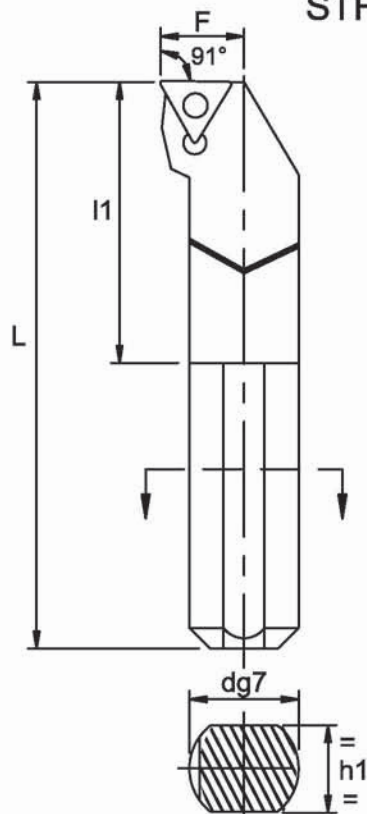
## Note:

We can suit ISO insert any make like

SANDVIK, SECO, WIDIA, KORLOY, MITSUBISHI, ISCAR, TAEGUTEC, PLANSEE TIZIT, KYOCERA etc.,

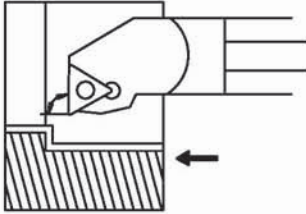


## STFCR/L (CARBIDE SHANK)



Geometry of the  
insert seating:  
Cutting rake 0°

Right-hand Shown

Application	Part No.	Dimensions in mm						rake	Inserts TCM
		d	h1	L	L1	F	D min		
91° 	C12M-STFCR/L 11	12	11	150	30	9	16	-10°	1102..
	C16R-STFCR/L 11	16	15	200	35	11	20	-6°	
	C20S-STFCR/L 11	20	18	250	30	13	25	-3°	
	C25T-STFCR/L 16	25	23	300	37	17	32	-6°	16T3..
	C32U-STFCR/L 16	32	30	350	43	22	40	-10°	
	C40V-STFCR/L 16	40	37	400	60	27	50	-8°	

## Spare Parts

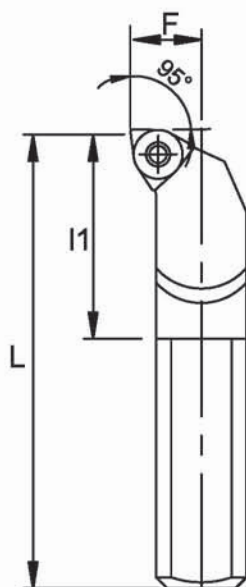
Insert	Insert screw	Torx key
TCMT 1102	M2.5 X 0.45	T 8
TCMT 16T3	M4.0 X 0.70	T 15

Note:

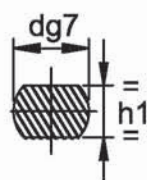
We can suit ISO insert any make like

SANDVIK, SECO, WIDIA, KORLOY, MITSUBISHI, ISCAR, TAEGUTEC, PLANSEE TIZIT, KYOCERA etc.,

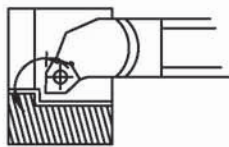
## SWLCR/L



Geometry of the  
insert seating:  
Cutting rake 0°



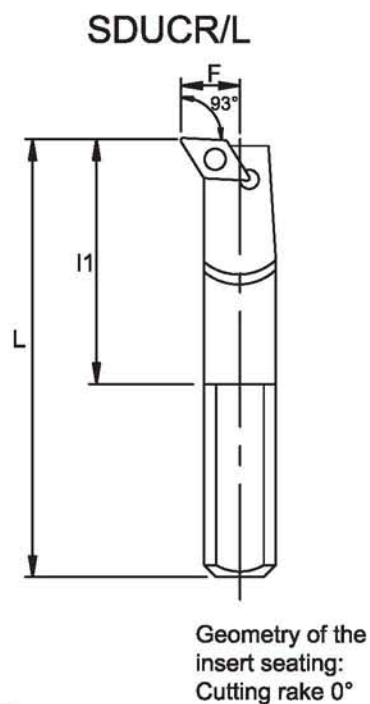
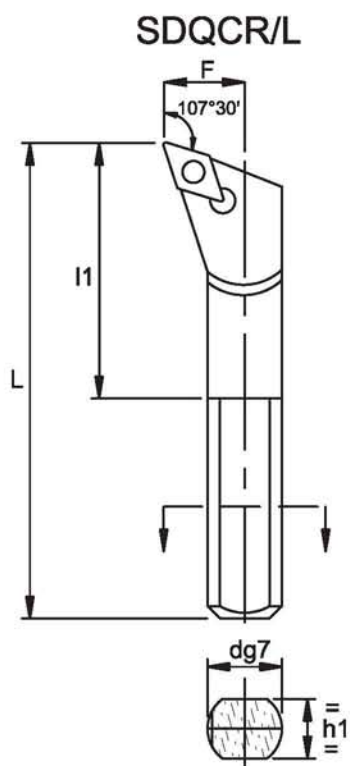
Right-hand Shown

Application	Part No.	Dimensions in mm						rake	Inserts WC_T
		D min	d	h1	L	l1	F		
95° 	S20S-SWLCR/L 06	25	20	18	250	41.6	13	-8°	0603..
	S25T-SWLCR/L 08	32	25	23	300	46.6	17	-7°	0804..
	S32U-SWLCR/L 08	40	32	30	350	51.6	22	-5°	

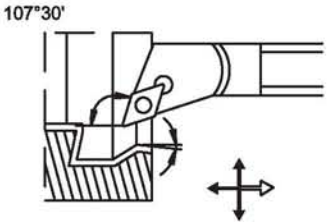
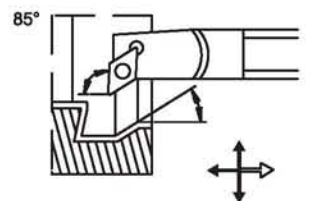
## Spare Parts

Insert	Insert screw	Torx key
WC-T 06	M3.5 x 0.60	T 15
WC-T 08	M4.5 x 0.75	T 20





Right-hand Shown

Application	Part No.	Dimensions in mm					D min	rake	Inserts DCM
		d	h1	L	l1	F			
	S10L-SDQCR/L 07-R	10	-	140	25	7	13	-11°	0702..
	S12N-SDQCR/L 07-R	12	-	160	30	9	17	-11°	
	S16Q-SDQCR/L 07	16	15	180	40	11	22	-5°	
	S16Q-SDQCR/L 07-R	16	-	180	40	11	22	-5°	
	S20R-SDQCR/L 11	20	18	200	50	13	25	-5°	11T3..
	S20R-SDQCR/L 11-R	20	-	200	50	13	25	-5°	
	S12N-SDUCR/L 07	12	11	160	30	9	17	-11°	0702..
	S12N-SDUCR/L 07-R	12	-	160	30	9	17	-11°	
	S16Q-SDUCR/L 07-R	16	15	180	40	11	22	-5°	
	S16Q-SDUCR/L 07-R	16	-	180	40	11	22	-5°	
	S20R-SDUCR/L 11	20	18	200	50	13	25	-5°	11T3..
	S20R-SDUCR/L 11-R	20	-	200	50	13	25	-5°	
	S25S-SDUCR/L 11	25	23	250	50	17	32	-5°	
	S25S-SDUCR/L 11-R	25	-	250	50	17	32	-5°	

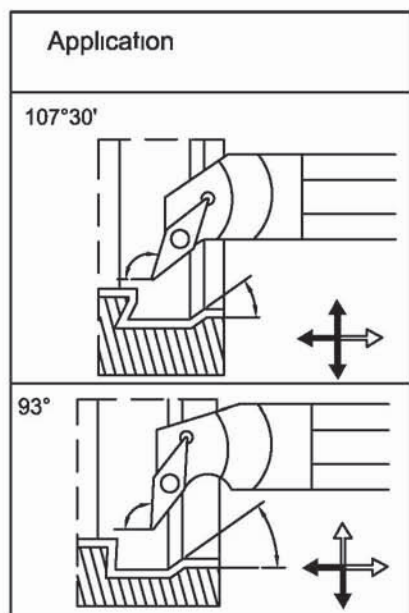
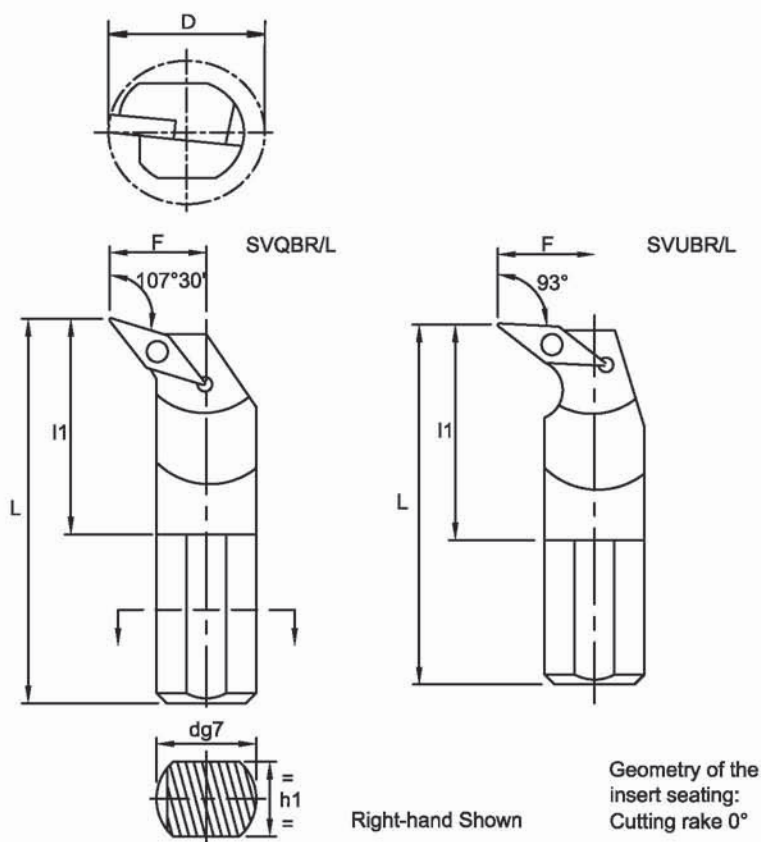
### Spare Parts

Insert	Insert Screw	Torx Key
DCMT 0702	M2.5 x0.45	T 8
DCMT 11T3	M3.5 x0.60	T 15

#### Note:

We can suit ISO insert any make like

SANDVIK, SECO, WIDIA, KORLOY, MITSUBISHI, ISCAR, TAEGUTEC, PLANSEE TIZIT, KYOCERA etc.,



Part No.	Dimensions in mm					D min	rake	Inserts VB...
	d	h1	L	l1	F			
S16R-SVQBR/L 11	16	15	200	32.4	13	22	-7°	1102..
S20S-SVQBR/L 11	20	18	250	33.4	15	27	-6°	
S25T-SVQBR/L 11	25	23	300	39.4	18	33	-4°	
S25S-SVQBR/L 16	25	23	250	50	17	32	-8°	1604..
S25S-SVQBR/L 16-R	25	-	250	50	17	32	-8°	
S32T-SVQBR/L 16	32	30	300	55	22	40	-8°	
S32T-SVQBR/L 16-R	32	-	300	55	22	40	-8°	
S40U-SVQBR/L 16	40	37	350	60	27	50	-8°	
S40U-SVQBR/L 16-R	40	-	350	60	27	50	-8°	1102..
S16R-SVUBR/L 11	16	15	200	27	13	22	-7°	
S20S-SVUBR/L 11	20	18	250	30	15	27	-5°	
S25T-SVUBR/L 11	25	23	300	35	18	33	-3°	

### Spare Parts

Insert	Insert Screw	Torx Key
VBMT 1102	M2.5 x 0.45	T 8
VBMT 16T3	M3.5 x 0.60	T 15

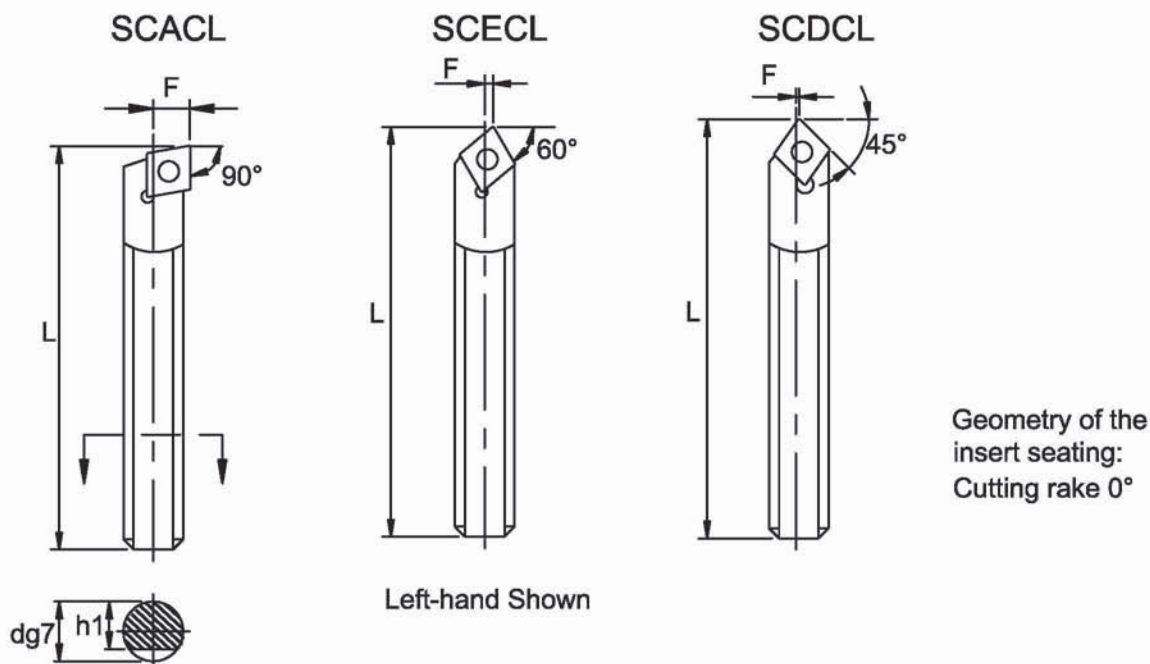
Note:

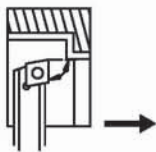
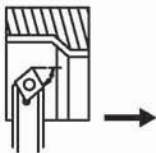

We can suit ISO insert any make like

SANDVIK, SECO, WIDIA, KORLOY, MITSUBISHI, ISCAR, TAEGUTEC, PLANSEE TIZIT, KYOCERA etc.,



### Boring Tools (Round Shank) for inserts CCMT and CCMW



Application	Part No.	Dimensions in mm				Inserts CCM
		d	h1	L	F	
90° 	S08A-SCACL 06	8	6,3	32	4,5	0602..
	S10C-SCACL 06	10	8,3	50	5,3	
	S12D-SCECL 06	12	10,3	60	6,7	09T3..
60° 	S08A-SCECL 06	8	6,3	32	1,5	0602..
	S10C-SCECL 06	10	8,3	50	2,4	
	S12D-SCECL 09	12	10,3	60	2,3	09T3..
45° 	S08A-SCDCL 06	8	6,3	32	0,3	0602..
	S10C-SCDCL 06	10	8,3	50	1,2	
	S12D-SCDCL 09	12	10,3	60	0,45	09T3..

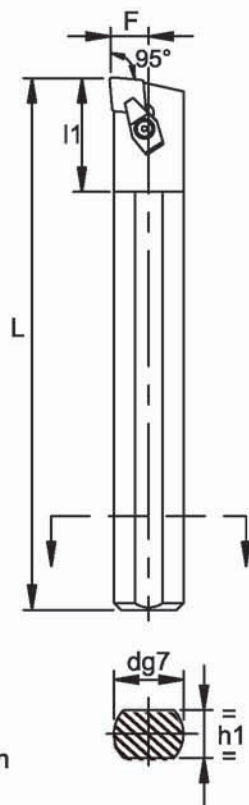
#### Spare Parts

Insert	Insert screw	Torx key
CCMT 060204	M2.5 x 0.45	T 8
CCMT 09T308	M3.5 x 0.60	T 15

#### Note:

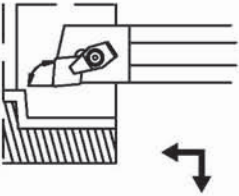
We can suit ISO insert any make like  
SANDVIK, SECO, WIDIA, KORLOY, MITSUBISHI, ISCAR,  
TAEGUTEC, PLANSEE TIZIT, KYOCERA etc.,

## CCLNR/L



Right-hand Shown

Geometry of the  
insert seating:  
Cutting rake-6°

Application	Part No.	Dimensions in mm					D min	rake	Inserts CCG
		d	h1	L	l1	F			
95° 	S16Q-CCLNR/L 09	16	15	180	30	11	20	-9°	0903..
	S20R-CCLNR/L 09	20	18	200	34	13	25	-8°	
	S25R-CCLNR/L 09	25	23	250	36	17	32	-8°	0903..
	S32S-CCLNR/L 09	32	30	250	38	22	40	-12°	

## Spare Parts - WIDIA

Insert	Clamp	Clamp screw
CC.N 0903	73085868	M6x15L

## Note:

We can suit ISO insert any make like

SANDVIK, SECO, WIDIA, KORLOY, MITSUBISHI, ISCAR, TAEGUTEC, PLANSEE TIZIT, KYOCERA etc.,