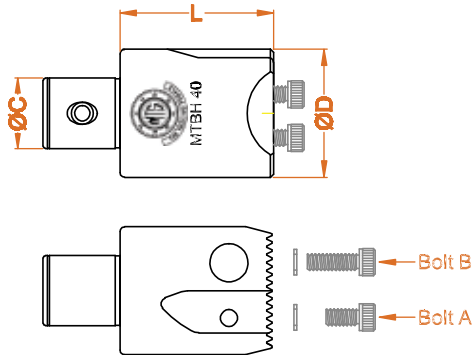
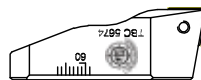


Twin Bore Head



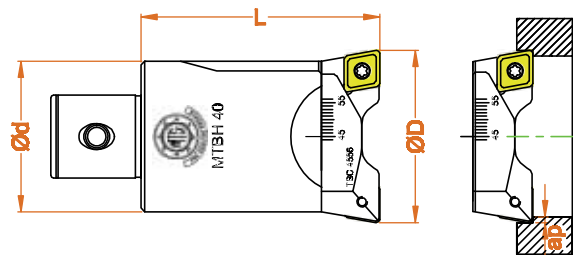
Order Ref.	ØD	ØC	L	Bolt A	Bolt B	N.W.
TBH 20	20	11	33	M3x8	M3x16	0.11
TBH 25	25	14	40	M4x10	M4x18	0.15
TBH 32	32	18	50	M5x10	M5x20	0.33
TBH 40	40	22	48	M6x12	M6x20	0.48
TBH 50	50	28	62	M6x14	M6x25	0.96
TBH 63	63	36	58	M8x16	M8x30	1.54
TBH 80	63	36	58	M8x16	M8x30	1.96
TBH 120	100	56	73	M10x20	M10x40	5.85

Twin Bore Cartridge



Order Ref.	Boring Head	Boring Range ØDmin ~ ØDmax	W	E	Insert	ap	Torx Screw	Torx Key	N.W.
TBC 2329	MTBH 20	23 ~ 29	10	18	CCMT 0602..	0.5-1	M2.5	T8	0.01
TBC 2936	MTBH 25	29 ~ 36	12	26	CCMT 0602..	1-2.5	M2.5	T8	0.01
TBC 3645	MTBH 32	36 ~ 45	12	32	CCMT 0602..	1-2.5	M2.5	T8	0.02
TBC 4556	MTBH 40	45 ~ 56	16	40	CCMT 09T3..	0.5-1	M4.0	T15	0.04
TBC 5674	MTBH 50	56 ~ 74	18	49	CCMT 09T3..	1-3.5	M4.0	T15	0.06
TBC 7090	MTBH 63	70 ~ 90	23	61	CCMT 1204..	0.5-1	M5.0	T20	0.12
TBC 90130	MTBH 80	90 ~ 130	23	80	CCMT 1204..	1-4.5	M5.0	T20	0.17
TBC 130190	MTBH 120	130 ~ 190	28	120	CCMT 1204..	1-4.5	M5.0	T20	0.41

Twin Bore Head with Cartridge



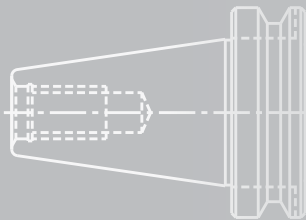
Order Ref.	Boring Range ØDmin ~ ØDmax	L	Ød	Boring Head	Cartridge	Insert	ap	N.W.
MTBH 20	23 ~ 29	42	20	TBH 20	TBC 2329	CCMT 0602..	0.5-1	0.10
MTBH 25	29 ~ 36	50	25	TBH 25	TBC 2936	CCMT 0602..	0.5-1	0.17
MTBH 32	36 ~ 45	63	32	TBH 32	TBC 3645	CCMT 0602..	1-2.5	0.37
MTBH 40	45 ~ 56	63	40	TBH 40	TBC 4556	CCMT 09T3..	0.5-1	0.56
MTBH 50	56 ~ 74	80	50	TBH 50	TBC 5674	CCMT 09T3..	1-3.5	1.10
MTBH 63	70 ~ 90	80	63	TBH 63	TBC 7090	CCMT 1204..	0.5-1	1.78
MTBH 80	90 ~ 130	80	63	TBH 80	TBC 90130	CCMT 1204..	0.5-1	2.30
MTBH 120	130 ~ 190	100	100	TBH 120	TBC 130190	CCMT 1204..	1-4.5	6.67

Above Boring head can be suited to basic adaptor such as ISO, BT, DIN, ANSI, HSK etc. based on your working length

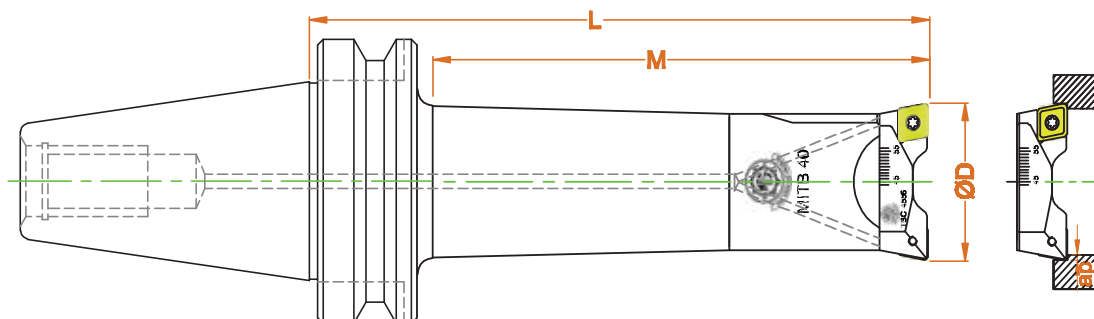
Technical drawing of a 40-BE1M probe. The drawing shows a side view of the probe with dimensions L (total length), M (length of the main body), and ØD (outer diameter). A cross-section view on the right shows the internal structure and the probe tip.

BT50-MTBH20-122	23 ~ 29	76	122	BT50-M20-080	MTBH20	TBC 2329	CCMT 0602..	0.5-1 1-2.5	M2.5	T8				
BT50-MTBH25-150	29 ~ 36	104	150	BT50-M25-100	MTBH25	TBC 2936								
BT50-MTBH32-182	36 ~ 45	136	182	BT50-M32-120	MTBH32	TBC 3645								
BT50-MTBH40-182	45 ~ 56	136	182	BT50-M40-120	MTBH40	TBC 4556	CCMT 09T3..	0.5-1 1-3.5	M4.0	T15				
BT50-MTBH40-244		198	244	BT50-M40-180										
BT50-MTBH50-145	56 ~ 74	98	145	BT50-M50-065	MTBH50	TBC 5674								
BT50-MTBH50-245		198	245	BT50-M50-165										
BT50-MTBH50-345		298	345	BT50-M50-265										
BT50-MTBH63-165	70 ~ 90	118	165	BT50-M63-085	MTBH63	TBC 7090					CCMT 1204..	0.5-1 1-4.5	M5.0	T20
BT50-MTBH63-245		198	245	BT50-M63-165										
BT50-MTBH63-345		298	345	BT50-M63-265										
BT50-MTBH80-165	90 ~ 130	118	165	BT50-M63-085	MTBH80	TBC 90130								
BT50-MTBH80-245		198	245	BT50-M63-165										
BT50-MTBH80-345		298	345	BT50-M63-265										
BT50-MTBH120-185	130 ~ 190	144	185	BT50-M100-085	MTBH120	TBC 130190								
BT50-MTBH120-265		224	265	BT50-M100-165										
BT50-MTBH120-365		324	365	BT50-M100-265										

HSK100A-MTBH20-107	23 ~ 29	70	107	HSK100A-M20-065	TBH20	TBC 2329	CCMT 0602..	0.5-1 1-2.5	M2.5	T8
HSK100A-MTBH25-115	29 ~ 36	80	115	HSK100A-M25-065	TBH25	TBC 2936				
HSK100A-MTBH32-128	36 ~ 45	92	128	HSK100A-M32-065	TBH32	TBC 3645				
HSK100A-MTBH32-183		148	183	HSK100A-M32-120						
HSK100A-MTBH40-128	45 ~ 56	92	128	HSK100A-M40-065	TBH40	TBC 4556	CCMT 09T3..	0.5-1 1-3.5	M4.0	T15
HSK100A-MTBH40-183		148	183	HSK100A-M40-120						
HSK100A-MTBH50-145	56 ~ 74	110	145	HSK100A-M50-065	TBH50	TBC 5674				
HSK100A-MTBH50-200		165	200	HSK100A-M50-120						
HSK100A-MTBH63-155	70 ~ 90	120	155	HSK100A-M63-075	TBH63	TBC 7090	CCMT 1204..	0.5-1 1-4.5	M5.0	T20
HSK100A-MTBH63-210		175	210	HSK100A-M63-130						
HSK100A-MTBH80-155	90 ~ 130	120	155	HSK100A-M63-075	TBH80	TBC 90130				
HSK100A-MTBH80-210		175	210	HSK100A-M63-130						
HSK100A-MTBH120-185	130 ~ 190	150	185	HSK100A-M100-085	TBH120	TBC 130190				
HSK100A-MTBH120-240		205	240	HSK100A-M100-140						



MITB - Integral Twin Edge Boring Bar - BT Shank



Order Ref.	Boring Range ØDmin ~ ØDmax	M	L	Cartridge	Insert	ap	Torx Screw	Torx Key
BT30-MITB20-90	23 ~ 29	64	90	TBC 2329	CCMT 0602..	0.5-1 1-2.5	M2.5	T8
BT30-MITB25-100	29 ~ 36	74	100	TBC 2936				
BT30-MITB32-105	36 ~ 45	79	105	TBC 3645				
BT30-MITB40-120	45 ~ 56	94	120	TBC 4556	CCMT 09T3..	0.5-1 1-3.5	M4.0	T15
BT30-MITB50-120	56 ~ 74	94	120	TBC 5674				
BT30-MITB63-120	70 ~ 90	94	120	TBC 7090	CCMT 1204..	1-4.5	M5.0	T20

BT40-MITB20-100	23 ~ 29	68	100	TBC 2329	CCMT 0602..	0.5-1 1-2.5	M2.5	T8
BT40-MITB25-105	29 ~ 36	73	105	TBC 2936				
BT40-MITB25-135	29 ~ 36	102	135					
BT40-MITB32-120	36 ~ 45	88	120	TBC 3645				
BT40-MITB32-150	36 ~ 45	118	150					
BT40-MITB40-135	45 ~ 56	102	135	TBC 4556	CCMT 09T3..	0.5-1 1-3.5	M4.0	T15
BT40-MITB40-165	45 ~ 56	132	165					
BT40-MITB50-150	56 ~ 74	118	150	TBC 5674				
BT40-MITB50-180	56 ~ 74	148	180					
BT40-MITB63-150	70 ~ 90	118	150	TBC 7090	CCMT 1204..	0.5-1 1-4.5	M5.0	T20
BT40-MITB63-210	70 ~ 90	178	210					
BT40-MITB80-165	90 ~ 130	132	165	TBC 90130				

BT50-MITB20-120	23 ~ 29	75	120	TBC 2329	CCMT 0602..	0.5-1 1-2.5	M2.5	T8
BT50-MITB25-135	29 ~ 36	90	135	TBC 2936				
BT50-MITB25-150	29 ~ 36	105	150					
BT50-MITB32-135	36 ~ 45	90	135	TBC 3645				
BT50-MITB32-165	36 ~ 45	120	165					
BT50-MITB40-150	45 ~ 56	106	150	TBC 4556	CCMT 09T3..	0.5-1 1-3.5	M4.0	T15
BT50-MITB40-180	45 ~ 56	136	180					
BT50-MITB50-150	56 ~ 74	106	150	TBC 5674				
BT50-MITB50-180	56 ~ 74	136	180					
BT50-MITB63-165	70 ~ 90	120	165	TBC 7090				
BT50-MITB63-210	70 ~ 90	166	210					
BT50-MITB80-180	90 ~ 130	136	180	TBC 90130				
BT50-MITB80-240	90 ~ 130	195	240					
BT50-MITB120-210	130 ~ 190	170	210	TBC 130190				